



FUNDING OUR FUTURE

Developing community facilities at
Lisbiggeen, the home of Kilmaley GAA



Proud of our history, ambitious for the future.

At the core of our community

A passion for hurling in Kilmaley can be traced right back to 1886. It is part of who we are. This project is about its future in our parish; a future at the centre of our community. Kilmaley GAA is at an exciting stage in its development. As hurling and camogie clubs work to come together under the One Club GAA integration model, the clubs are keen to continue the development of facilities at Lisbiggeen. Facilities that everyone in our community can enjoy and take pride in. Facilities fit for our current and future hurling and camogie talent and a destination where those in and outside our parish come to play and connect.



On your doorstep

What do we have already?

The story of Lisbiggeen began with a greenfield site in 2007. In 2015 Kilmaley GAA moved from its old headquarters at Frost Pitch. Development has continued since then. The clubhouse is home to a gym, four dressing rooms, shop, meeting rooms and machinery shed. The facility also boasts a large wall ball, a 65m x 35m sized astro turf pitch and playground. 2023 saw the addition of a 1km walkway around the two pitches. It is now an impressive facility that welcomes families on a weekly basis and is a cornerstone of our community.



Main pitch and training pitch



Carpark



Clubhouse and shop



Gym facilities



Ball wall



Astro-turf



Walkway



Playground

How you feel about Lisbiggeen?

"It's a fantastic facility already."

"I feel very fortunate and proud to have such a super amenity in our parish."

"I'm looking forward to future developments."

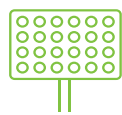
Your views?

What you told us?

This facility is for you to enjoy. Keen to get your feedback and input on the next phase of development we opened a public consultation survey in November 2023. 172 of you candidly shared your views.

Which capital projects would you prioritise?

Installing floodlights received the largest first preference vote while a new covered stand was the largest overall weighted priority. Here's how people prioritised investment based on their demographics:



AGE 21-30

- 1: Floodlights
- 2: Stand
- 3: More parking



AGE 31-40

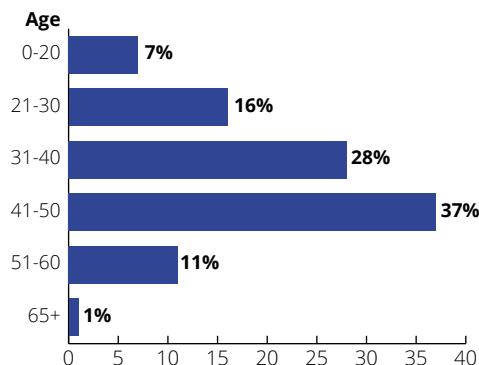
- 1: Floodlights
- 2: Stand
- 3: More parking



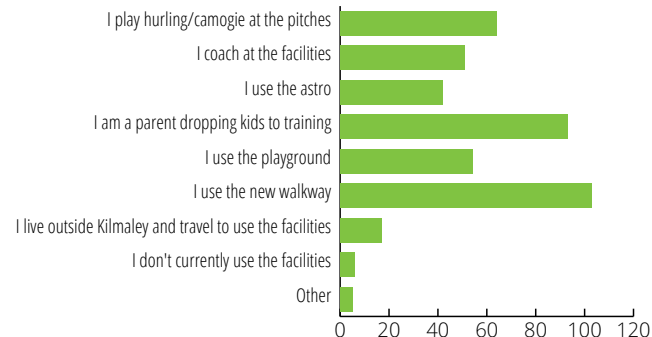
AGE 41-50

- 1: Stand
- 2: More parking
- 3: Floodlights

Who participated?



How do you use the facilities?



How would you improve the facility?

Parking and traffic flow

Parking is your number one priority when it comes to improvements. You want more parking, safer traffic flow and a resurfaced carpark.

Expand the gym

You would like to see expansion in terms of both space and equipment. You would also like more access to the gym.

Walkway

You want a safer, resurfaced, fenced walkway. You also want to see continued development of the walkway with distance markers, shelter etc.

Maintenance

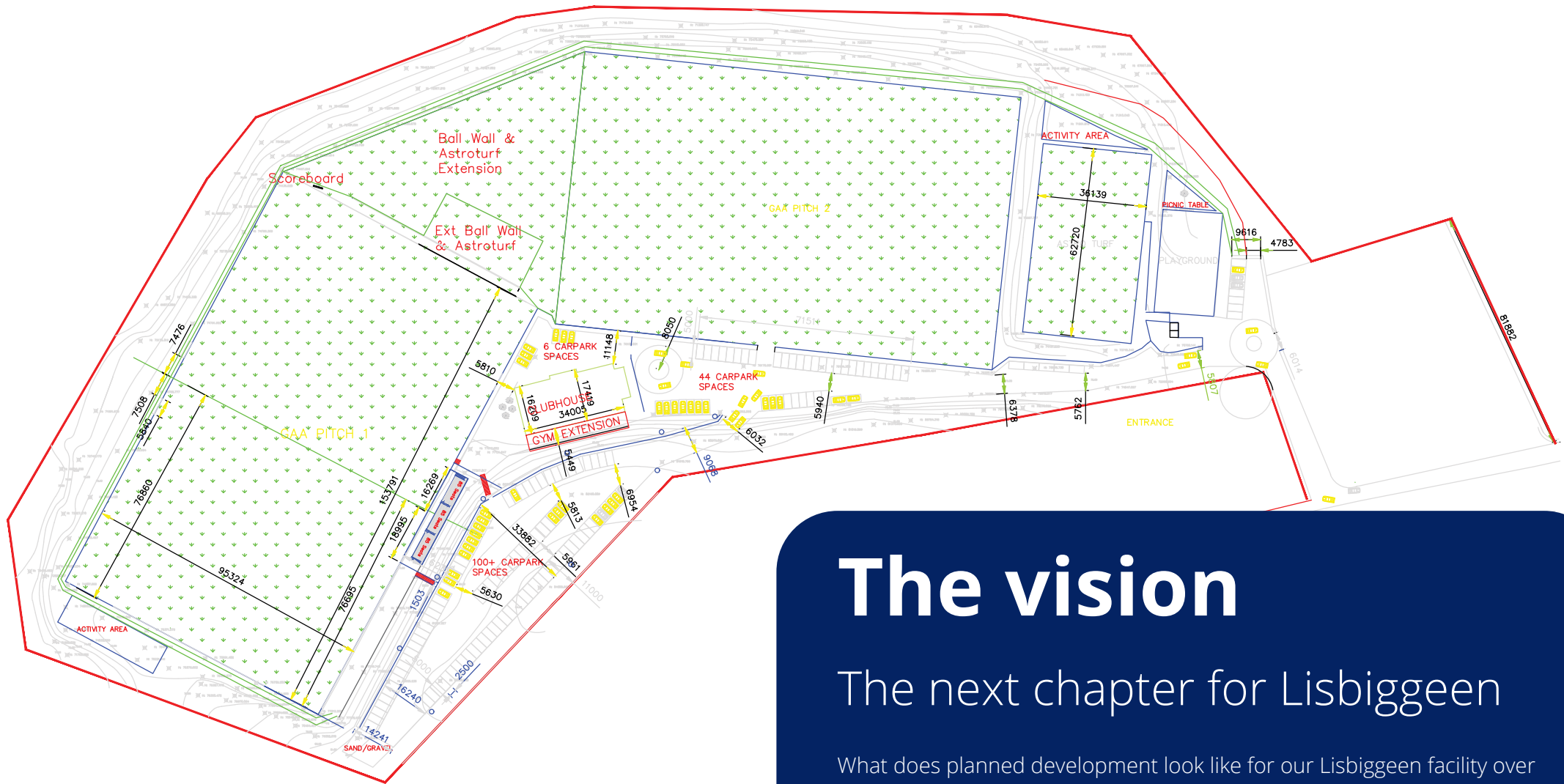
You would like to see better overall maintenance at the Lisbiggeen facility.

Clubhouse and shop

You want to see more activities happening in the clubhouse. You would like to see it open more often with a better offering. You want coffee and branded products in the shop!

Inclusion

You want Lisbiggeen to be welcoming for everyone irrespective of where you are from or whether you have a hurley! You want all community groups to work together to develop facilities.



The vision

The next chapter for Lisbiggeen

What does planned development look like for our Lisbiggeen facility over the next 5-10 years?

Our next phase of works could include some of the following:

- Main carpark resurfacing
- Addition of new upper carpark
- Entrance, roadway and traffic flow improvements
- A covered stand
- Floodlights
- Ball wall extension
- Clubhouse gym extension
- Walkway safety improvements
- Landscaping of site

What will this look like?

Proposed 250 seat stand at Lisbiggeen



Proposed new upper carpark



Stand and upper carpark view



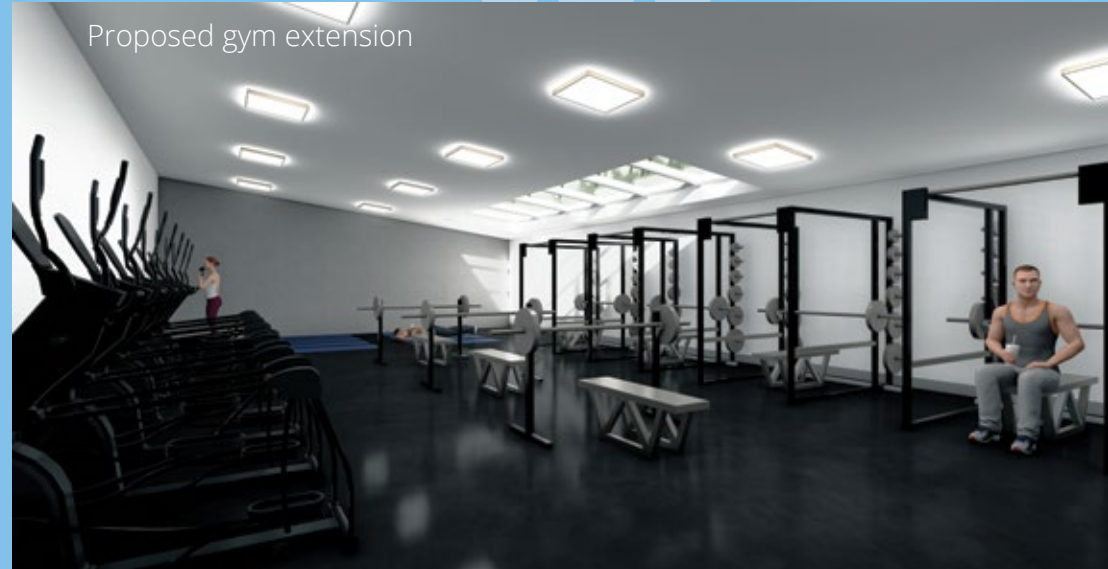
Existing carpark resurfacing at Lisbiggeen



Aerial view of new developments



Proposed gym extension



Proposed floodlights



Proposed ball wall extension

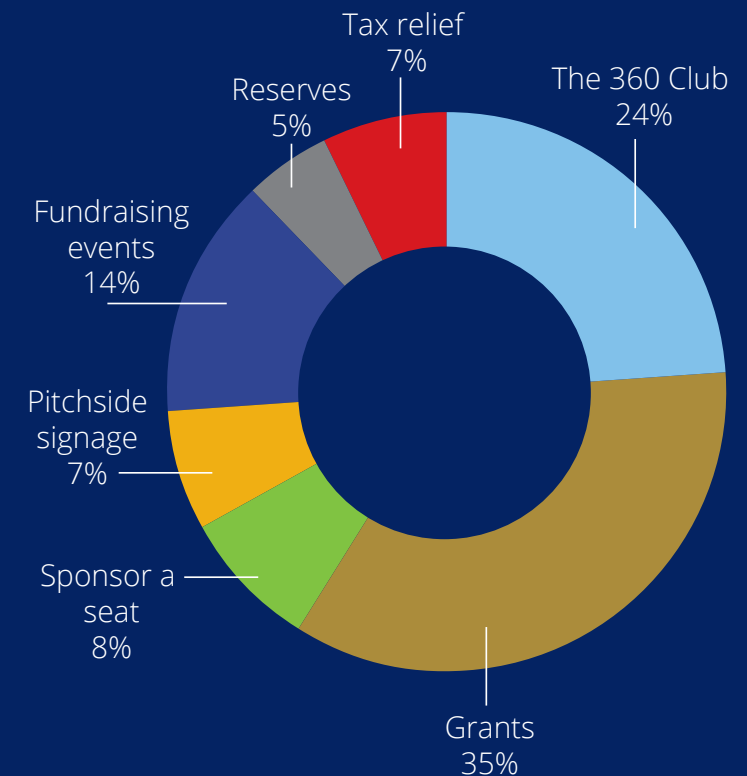


What will this cost and where will the money come from?

Cost item	Projected cost (VAT inclusive) €	Grant awarded/ estimated	Net €
Main carpark resurfacing, upper carpark operational	135,000	50,000	85,000
Stand (250 seats)	98,000	35,000	63,000
Floodlights	270,000	140,000	130,000
New gym extension including fit-out	190,000	70,000	120,000
Ball wall, lighting upgrade and astro extension	125,357	20,000	105,357
Sub-total	818,357	315,000	503,357
Contingency	72,181	0	72,181
Total	890,538	315,000	575,538

The table above shows estimated pre-tender costs for the next phase of this development.

The pie chart outlines how we'll fund this phase of development. In terms of timelines, the immediate focus in year one will be on the carpark followed by a year two focus on stand construction. The programme of work will be flexed to match awarded grant funding and working capital requirements. You can explore these areas and how you can get involved overleaf.



How can you help?

Lots of ways to get involved

Many of you already give a lot to Kilmaley GAA. You give of your time as supporters, players, parents, coaches and volunteers. We are asking for your continued support to help create something that will leave a lasting impact on Lisbiggeen and on our community. There are a number of ways to get involved.

1

Join 'The 360 Club'

The objective of 'The 360 Club' is to attract 200 members of our community to play a critical role in funding the next chapter of Lisbiggeen. Each individual/family will commit to contributing €30 per month to this fund for 3 years. This would equate to a donation of €360 per year, totalling €1,080 over the 3 year period. Under Irish Revenue rules, an approved sports body (The Club) can also claim tax relief at either 20% or 40% on donations made, if the individual donating is a PAYE taxpayer.

2

Donate a seat

You can donate a seat in our planned new stand. This will allow you to customise an engraved inscription with your name in the format, 'Donated by Joe Bloggs'. This inscription will be permanently placed on a seat in our new stand. This option will be of particular interest to current and past members of our clubs who no longer play an active role in the club, people who want to honour a loved one that may have passed away, or even those living outside the parish or abroad. It is an ideal way for you or a loved one to have a place in a more permanent way at the core of our facilities at Lisbiggeen. The cost of this donation is €500.

3

Promote your business

What is the opportunity for your business?

We are offering local businesses a unique opportunity to promote your products/services while playing a central role in helping us to complete the exciting next stage in our development. Building on our existing facilities Lisbiggeen, we are planning to add a covered stand, complete carpark re-surfacing and extension, complete gym and ball wall extensions, add floodlights and continue the development of our new walkway. With this in mind, we have a number of pitch-side advertising/business signage opportunities available at Lisbiggeen.

Top 3 reasons to get your business involved?

Pitch-side advertising is a powerful way to support Kilmaley GAA while promoting your business.

1. Ensure your business is always top-of-mind with existing customers in the community.
2. Attract new customers by advertising to a footfall of 25,000 people annually and an additional 5,000 social media followers.
3. Positively position your business at the heart of the community to potential employees.

How much does it cost?

Size of board	Promotion via Kilmaley GAA social media	Donors will recognition in Clubhouse	Cost for 5 years (€)
8ft x 3ft	Annual promotion with other sponsors	No	1,200
16ft x 3ft	Twice annual promotion with other sponsors	No	3,000
16ft x 3ft	Exclusive business spotlight post, twice annual promotion with other sponsors	Yes	5,000

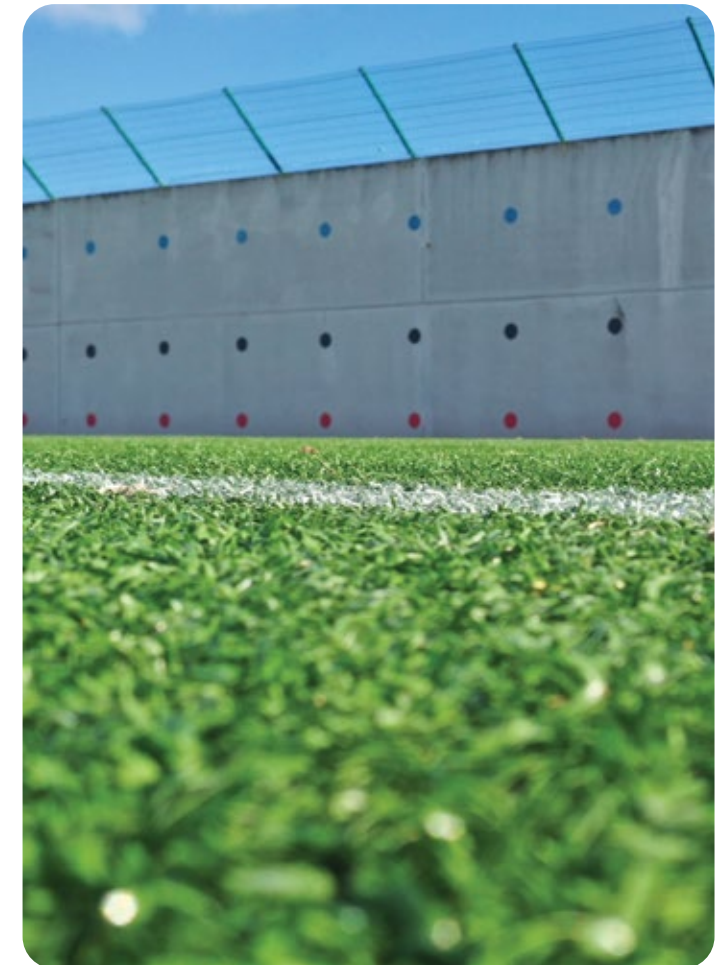
4

Once-off donation

You can also make a once-off donation by contacting us at support@kilmaleygaafundraising.com

Fund-raising events

Fund-raising events will be used throughout the duration of the development. These events will be used on a flexible basis to supplement donation streams and grant funding received.



What to do next?

Visit www.kilmaleygaa.ie/future to choose the package that works best for you, or scan the QR code now.



If you prefer to arrange an electronic transfer, bank details for Kilmaley GAA are as follows:

- Payee: Kilmaley Hurling Club Development Fund
- IBAN: IE96 AIBK 9351 2312 0254 40
- BIC: AIBKIE2D
- Bank: AIB, Bank Place, Ennis, Co Clare

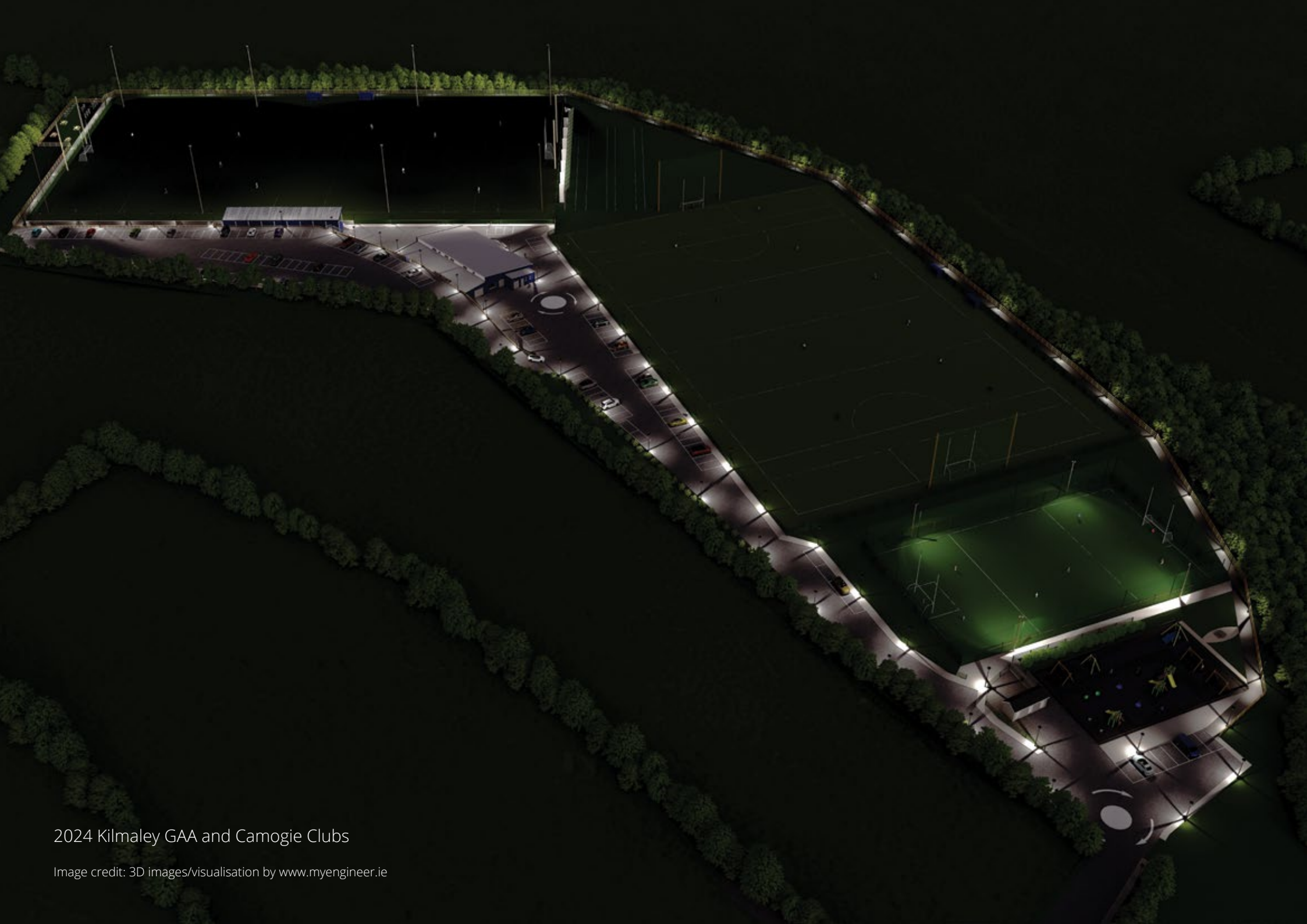
Your name should be referenced in the description so it appears on the club's bank statement.

Contact us: support@kilmaleygaa fundraising.com

Ní neart go cur le chéile

'Stronger together'

Making our vision a reality will need everyone to get involved, right across our community and beyond. We are looking forward to working with you all.



2024 Kilmaley GAA and Camogie Clubs

Image credit: 3D images/visualisation by www.myengineer.ie